



Ref:
Date:
Enclosed:

شماره: ۳۰۰۰/۰۱/۲۸۳۱/ص
تاریخ: ۱۴۰۱/۰۸/۲۸
پیوست: دارد

به نام خدا

مدیران محترم شرکتهای کشتیرانی ، نماینده کشتیرانی ، خدمات بندری و ... عضو و غیر عضو

موضوع: نرخ اجاره زمانی شناورهای کانتینر بر در تاریخ ۲۰۲۲.۱۱.۱۷

با سلام؛

احتراماً به پیوست تصویر گزارش فدراسیون انجمن های ملی کشتیرانی و عوامل آن (فوناسبا) با موضوع " نرخ اجاره زمانی شناورهای کانتینر بر در تاریخ ۲۰۲۲.۱۱.۱۷ " جهت استحضار ارسال میگردد.

با تجدید احترام

مسعود پل مه

دبیر کل



New ConTex Container Ship Time Charter Assessment Index

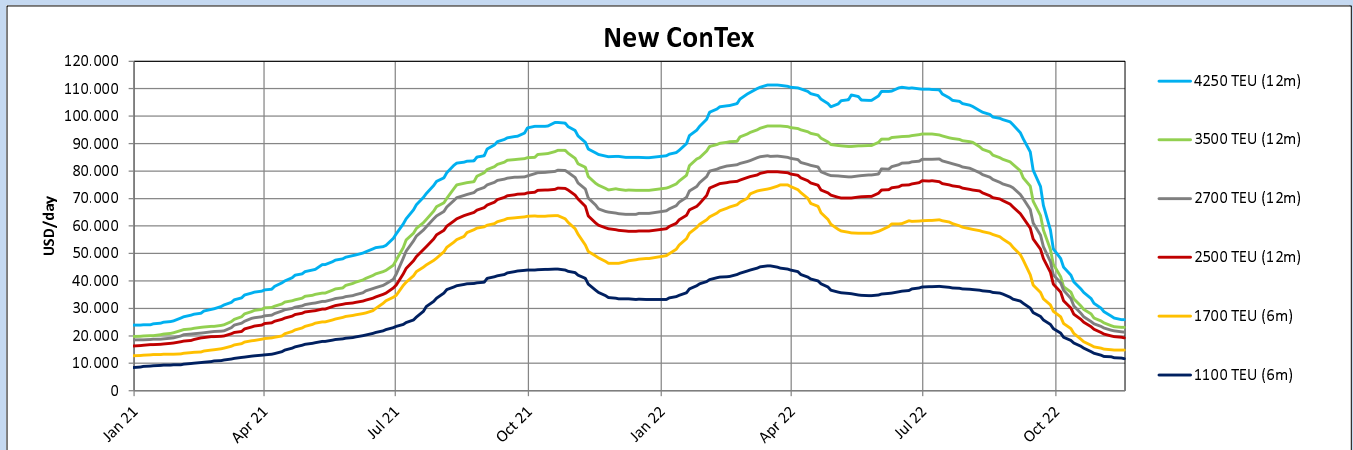
New ConTex*		845	
17.11.22		6 mos	12 mos
Geared	1100 TEU	\$11.725	n.a.
	1700 TEU	\$14.804	
	2500 TEU		\$19.275
Gearless	2700 TEU	n.a.	\$21.400
	3500 TEU		\$23.060
	4250 TEU		\$25.880

Legend		
↑	up	+ 2% or more
↗	steady up	from +1% to +1,9%
→	steady	+/- 1 %
↘	steady down	from -1% to -1,9%
↓	down	- 2% or less

*New ConTex evaluation is EXCLUDING 1100/1700/5700/6500 TEU groups for 12 months period & 2500/2700/3500/4250 TEU groups for 24 months period

New ConTex-Commentary - issued:		17.11.22
<p>The container market experienced a slight dip in amount of fixtures being reported after several weeks of high activity level, especially in the smaller feeder segments. Although the overall trend is slightly downward there seems to be a general feeling of the market stabilizing throughout the segments and the arrows are slowly beginning to reflect same. In general, previous growing supply of prompt tonnage is evaporating and there are limited amount of availability for the remainder of the year. The Year-To-Year change continues to be heavily down, as it compares to a period where the market was historically at its peak this will naturally be the tendency going forward. The 1700TEU have experienced the most activity lately and this is reflected in the arrows point sideways with miniscule negative change on a Week-To-Week basis. Although from last month, the 1700TEU has seen the 6/12 month rate plummet with USD 3,500-4,000. The rest of the segments are very evenly matched, with trends moving slightly downwards between 1-3% on a Week-on-Week basis, while on a Month-on-Month comparison down 20-30%. With supply in the 4250TEU and above 'increasing' in 2023, it could result in bigger changes in the New ConTex with more fixtures being reported.</p>		

New ConTex Development											
Vessel type	Evaluated Period	Today	Week-on-Week		Month-on-Month		Year-on-Year				
		17.11.22	10.11.22	Change	Change	18.10.22	Change	Change	18.11.21	Change	Change
New ConTex*		845	860	-15	↔ -1,7%	1138	-293	↓ -25,7%	2691	-1.846	↓ -68,6%
1100 TEU	6 mos	\$11.725	\$12.058	-\$333	↓ -2,8%	\$16.175	-\$4.450	↓ -27,5%	\$35.800	-\$24.075	↓ -67,2%
	12 mos	\$10.948	\$11.181	-\$233	↓ -2,1%	\$14.925	-\$3.977	↓ -26,6%	\$31.088	-\$20.140	↓ -64,8%
1700 TEU	6 mos	\$14.804	\$14.850	-\$46	↔ -0,3%	\$18.817	-\$4.013	↓ -21,3%	\$48.417	-\$33.613	↓ -69,4%
	12 mos	\$14.252	\$14.308	-\$56	↔ -0,4%	\$17.854	-\$3.602	↓ -20,2%	\$42.104	-\$27.852	↓ -66,2%
2500 TEU	12 mos	\$19.275	\$19.736	-\$461	↓ -2,3%	\$26.000	-\$6.725	↓ -25,9%	\$60.227	-\$40.952	↓ -68,0%
	24 mos	\$16.236	\$16.559	-\$323	↔ -2,0%	\$19.886	-\$3.650	↓ -18,4%	\$41.595	-\$25.359	↓ -61,0%
2700 TEU	12 mos	\$21.400	\$21.832	-\$432	↔ -2,0%	\$28.182	-\$6.782	↓ -24,1%	\$66.273	-\$44.873	↓ -67,7%
	24 mos	\$17.559	\$17.886	-\$327	↔ -1,8%	\$22.332	-\$4.773	↓ -21,4%	\$45.805	-\$28.246	↓ -61,7%
3500 TEU	12 mos	\$23.060	\$23.345	-\$285	↔ -1,2%	\$30.870	-\$7.810	↓ -25,3%	\$74.800	-\$51.740	↓ -69,2%
	24 mos	\$19.253	\$19.445	-\$192	↔ -1,0%	\$24.725	-\$5.472	↓ -22,1%	\$54.000	-\$34.747	↓ -64,3%
4250 TEU	12 mos	\$25.880	\$26.460	-\$580	↓ -2,2%	\$37.030	-\$11.150	↓ -30,1%	\$86.100	-\$60.220	↓ -69,9%
	24 mos	\$22.195	\$22.810	-\$615	↓ -2,7%	\$29.800	-\$7.605	↓ -25,5%	\$64.100	-\$41.905	↓ -65,4%
5700 TEU	12 mos	\$34.933	\$35.494	-\$561	↔ -1,6%	\$45.611	-\$10.678	↓ -23,4%	\$98.222	-\$63.289	↓ -64,4%
6500 TEU	12 mos	\$42.417	\$43.256	-\$839	↔ -1,9%	\$54.333	-\$11.916	↓ -21,9%	\$104.500	-\$62.083	↓ -59,4%



Disclaimer

The brand NewConTex is copyrighted by Verband Hamburger und Bremer Schiffsmakler e.V. ("VHBS e.V.") and is protected by law. The NewConTex may be published only with the source reference © VHBS e.V. It is distributed to the general public for information purposes only and can not be relied upon as a trading recommendation and does not constitute a solicitation to trade. The reported information is obtained from market sources. While every effort has been made to ensure the accuracy and the completeness of the NewConTex, VHBS e.V. makes no representations, conditions or warranties of any kind, express or implied, about the completeness, accuracy, reliability, or suitability of the NewConTex. Any reliance you place on the NewConTex is therefore strictly at your own risk. Neither VHBS e.V. nor any of its subsidiaries or affiliates nor any employee of the foregoing shall be liable or have any responsibility for any loss, liability or damage, cost or expense including without limitation, indirect or consequential loss or damage, or any loss or damage whatsoever arising from loss of data or profits arising out of, or in connection with, the use of and the reliance on the NewConTex, save for death or personal injury arising from VHBS e.V. negligence and fraudulent misrepresentation that cannot, under German law, be excluded.