



Ref:  
Date:  
Enclosed:

شماره: ۳۰۰۰/۰۱/۲۹۳۳/ص  
تاریخ: ۱۴۰۱/۰۹/۱۲  
پیوست: دارد

به نام خدا

مدیران محترم شرکتهای کشتیرانی، نماینده کشتیرانی، خدمات بندری و ... عضو و غیر عضو

موضوع: نرخ اجاره زمانی شناورهای کانتینر بر در تاریخ ۲۰۲۲.۱۲.۰۱

با سلام؛

احتراماً به پیوست تصویر گزارش فدراسیون انجمن های ملی کشتیرانی و عوامل آن (فوناسبا) با موضوع " نرخ اجاره زمانی شناورهای کانتینر بر در تاریخ ۲۰۲۲.۱۲.۰۱ " جهت استحضار ارسال میگردد.

با تجدید احترام

مسعود پل مه

دبیر کل



## New ConTex Container Ship Time Charter Assessment Index

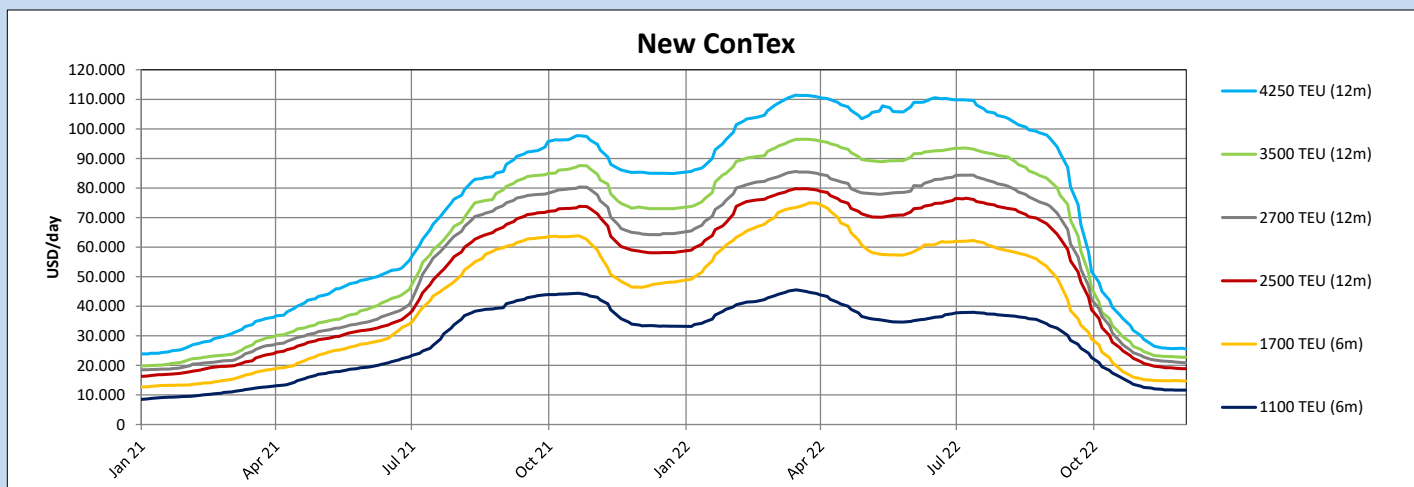
New ConTex*		833	
01.12.22		6 mos	12 mos
Geared	1100 TEU	\$11.663	n.a.
	1700 TEU	\$14.758	
	2500 TEU	\$18.879	
Gearless	2700 TEU	n.a.	\$20.873
	3500 TEU		\$22.730
	4250 TEU		\$25.545

Legend		
↑	up	+ 2% or more
↗	steady up	from +1% to +1,9%
→	steady	+/- 1 %
↘	steady down	from -1% to -1,9%
↓	down	- 2% or less

\*New ConTex evaluation is EXCLUDING 1100/1700/5700/6500 TEU groups for 12 months period & 2500/2700/3500/4250 TEU groups for 24 months period

New ConTex-Commentary - issued:	01.12.22
<p>After a couple of weeks of constantly falling time charter markets, it looks like that the individual segments have been able to stabilize lately over the recent weeks and building a market equilibrium. Although this week was in particular not super active the market participants are showing some resistance and manage to keep the current levels. The <i>New ConTex</i> is this week closing at 833 points which is only 6 points decrease week on week. The graph is very well illustrating that the segments are stabilizing after a rather steep fall. The CV1100 segment is showing a very little increase of only USD 48 week on week and closing at USD 11.663. In general, all size segments of the <i>New ConTex</i> are registering only very minor changes in region of about -0,7%. It remains to be seen if the last four weeks of trading in 2022 will present any surprises, although we do believe in a fairly easy and calm end of this year.</p>	

New ConTex Development											
Vessel type	Evaluated Period	Today	Week-on-Week		Month-on-Month			Year-on-Year			
		01.12.22	24.11.22	Change	Change	01.11.22	Change	Change	02.12.21	Change	Change
<b>New ConTex*</b>		<b>833</b>	839	-6	⇒ -0,7%	932	-99	↓ -10,6%	2607	-1.774	↓ -68,0%
1100 TEU	6 mos	\$11.663	\$11.615	\$48	⇒ 0,4%	\$12.967	-\$1.304	↓ -10,1%	\$33.421	-\$21.758	↓ -65,1%
	12 mos	\$10.735	\$10.758	-\$23	⇒ -0,2%	\$12.117	-\$1.382	↓ -11,4%	\$29.883	-\$19.148	↓ -64,1%
1700 TEU	6 mos	\$14.758	\$14.854	-\$96	⇒ -0,6%	\$15.479	-\$721	↓ -4,7%	\$46.421	-\$31.663	↓ -68,2%
	12 mos	\$14.237	\$14.235	\$2	⇒ 0,0%	\$14.633	-\$396	↓ -2,7%	\$41.838	-\$27.601	↓ -66,0%
2500 TEU	12 mos	\$18.879	\$19.064	-\$185	⇒ -1,0%	\$21.268	-\$2.389	↓ -11,2%	\$58.450	-\$39.571	↓ -67,7%
	24 mos	\$15.958	\$16.105	-\$147	⇒ -0,9%	\$17.514	-\$1.556	↓ -8,9%	\$41.523	-\$25.565	↓ -61,6%
2700 TEU	12 mos	\$20.873	\$21.134	-\$261	⇒ -1,2%	\$23.409	-\$2.536	↓ -10,8%	\$64.455	-\$43.582	↓ -67,6%
	24 mos	\$17.231	\$17.370	-\$139	⇒ -0,8%	\$19.136	-\$1.905	↓ -10,0%	\$45.445	-\$28.214	↓ -62,1%
3500 TEU	12 mos	\$22.730	\$22.913	-\$183	⇒ -0,8%	\$25.465	-\$2.735	↓ -10,7%	\$73.360	-\$50.630	↓ -69,0%
	24 mos	\$19.118	\$19.155	-\$37	⇒ -0,2%	\$21.200	-\$2.082	↓ -9,8%	\$53.790	-\$34.672	↓ -64,5%
4250 TEU	12 mos	\$25.545	\$25.735	-\$190	⇒ -0,7%	\$30.135	-\$4.590	↓ -15,2%	\$85.360	-\$59.815	↓ -70,1%
	24 mos	\$21.925	\$21.990	-\$65	⇒ -0,3%	\$25.375	-\$3.450	↓ -13,6%	\$64.130	-\$42.205	↓ -65,8%
5700 TEU	12 mos	\$34.785	\$34.856	-\$71	⇒ -0,2%	\$38.478	-\$3.693	↓ -9,6%	\$97.944	-\$63.159	↓ -64,5%
6500 TEU	12 mos	\$41.380	\$42.278	-\$898	↓ -2,1%	\$47.139	-\$5.759	↓ -12,2%	\$103.883	-\$62.503	↓ -60,2%



**Disclaimer**  
The brand NewConTex is copyrighted by Verband Hamburger und Bremer Schiffsmakler e.V. ("VHBS e.V.") and is protected by law. The NewConTex may be published only with the source reference © VHBS e.V. It is distributed to the general public for information purposes only and cannot be relied upon as a trading recommendation and does not constitute a solicitation to trade. The reported information is obtained from market sources. While every effort has been made to ensure the accuracy and the completeness of the NewConTex, VHBS e.V. makes no representations, conditions or warranties of any kind, express or implied, about the completeness, accuracy, reliability, or suitability of the NewConTex. Any reliance you place on the NewConTex is therefore strictly at your own risk. Neither VHBS e.V. nor any of its subsidiaries or affiliates nor any employee of the foregoing shall be liable or have any responsibility for any loss, liability or damage, cost or expense including without limitation, indirect or consequential loss or damage, or any loss or damage whatsoever arising from loss of data or profits arising out of, or in connection with, the use of and the reliance on the NewConTex, save for death or personal injury arising from VHBS e.V. negligence and fraudulent misrepresentation that cannot, under German law, be excluded.